



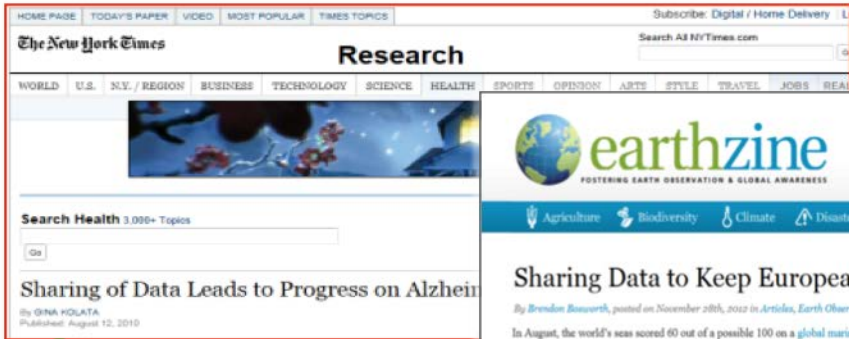
Research Data Alliance : Repositories

Beth Plale
Indiana University
Co-chair Technical Advisory Board

research data sharing without barriers
rd-alliance.org

*20 Nov 2014
Ann Arbor, MI*

Economic gains from more easily sharing data



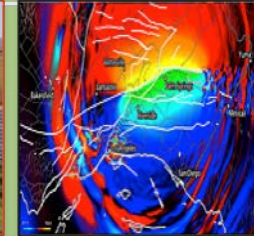
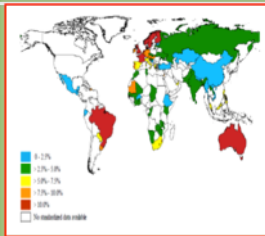
So - simply share data, right?



.....not quite



Many Infrastructure Building Blocks Needed to Accelerate Progress



Research Dissemination and Reproducibility

Data Use and Re-use

Data Access (now) and Preservation (later)

Data Discovery and Data Sharing

Data Access and Distribution Policy

Institutional Data Sharing Practice

Data Discovery Tools

Digital Object Identifiers

Common Metadata Standards

Data Citation Standards

Data Preservation Practice

Data Analytics Algorithms

Data Scientists and Expert Support

Curation Practice and Policy

Auditing, Certification and Reporting Practice

Sustainable Economic Models

Research Data Alliance

- Created to accelerate the development of research data sharing infrastructure worldwide
 - build *social, organizational and technical* infrastructure
 - reduce barriers to data sharing and exchange
 - accelerate the development of coordinated global data infrastructure
 - broad range of infrastructure pieces developed based on need



Organizational Approach

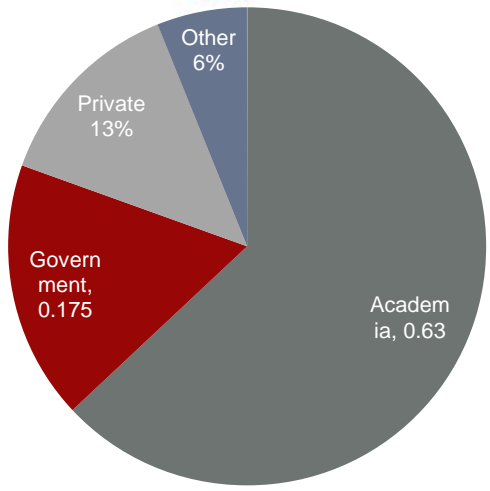
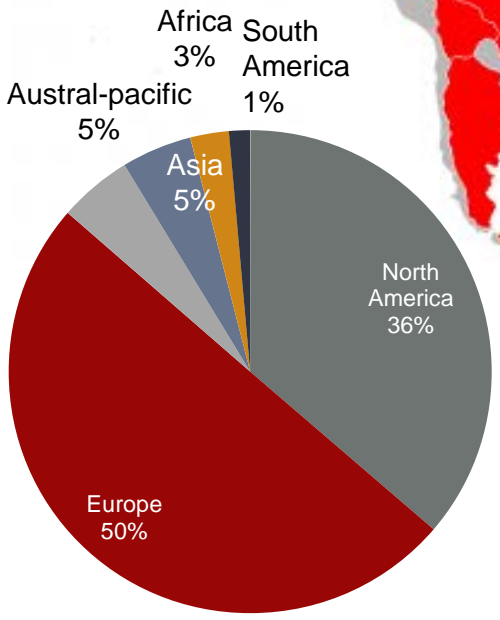
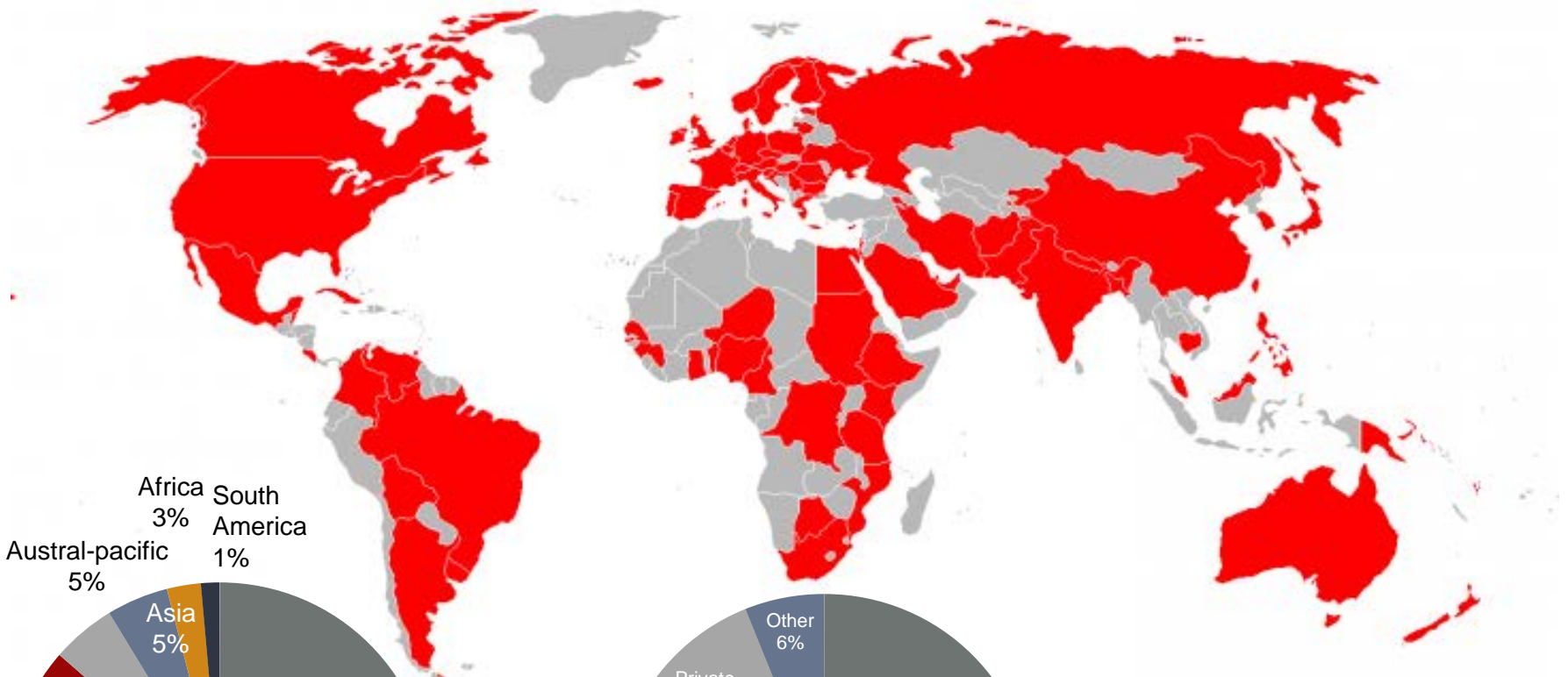
- Organic Groups
 - Coordination Groups
 - Interest Groups
 - Working Groups
- Plenaries and WG/IG meetings every six months (off-cycle)
- Interim activity as needed for others



Create -> Adopt -> Use

- **Birds-of-a-Feather** – group meets at Plenary to gauge broader interest in topic
- **Interest Groups** – longer-lived discussion forums that spawn Working Groups as specific pieces of needed infrastructure are identified.
- **Working Groups** – 12-18 month efforts to build, adopt, and use specific pieces of infrastructure
 - **Code, policy, infrastructure, standards, or best practices that are adopted and used** by communities to enable data sharing
 - **“Harvestable” efforts** for which 12-18 months of work can eliminate a roadblock
 - **Efforts that have substantive applicability** to groups within the data community, but may not apply to everyone
 - **Efforts for which working scientists and researchers can start today**





Map courtesy traveltip.org

Distribution of 2,353 Individual RDA Members in 96 Countries
12 September 2014



RDA/US – Contribute and Collaborate Globally and Locally

- RDA/US Goals:
 - Leverage and implement RDA deliverables in US to amplify impact
 - Build RDA community within US including fostering engagement by early career researchers
 - Collaborate closely with other RDA “regions” on key programs and initiatives
 - Contribute to RDA “international” efforts and leadership



Plenaries

- Plenary 4 – Amsterdam [Sept 22 – 24, 2014 with associated meetings]
 - *Emphasis on outputs*
- Plenary 5 – San Diego [March 9 – 12, 2015 with associated meetings before and after]
 - *Emphasis on adoption*



Relevant Activity

Domain Repositories Interest Group



Status: Recognized & Endorsed

The Domain Repositories Interest Group will bring together active data repositories that serve specific scientific disciplines. Domain repositories provide archiving services tailored to the needs of scientific communities, and they mediate between domain scientists and rapid changes in information and data science.

RDA/WDS Certification of Digital Repositories IG



Status: Recognised & Endorsed Joint RDA/WDS Interest Group

This Interest Group will build on previous work in the area of certification and deliver a global overview and a set of recommendations and requirements that allow the effective implementation of certification of digital repositories on a national, European and even global level.

RDA/WDS Publishing Data Workflows WG



The objectives of this Working Group are to provide an analysis of a representative range of existing and emerging workflows and standards for data publishing, including deposit and citation, and provide reference models and implementations for application in new workflows.

Repository Platforms for Research Data



Institutions, developers, and other members of the research data community struggle to choose, utilize, deploy or develop the best possible repository platform to meet particular research data needs. The Repository Platforms for Research Data working group will gather and analyze research data use cases in the context of repository platform requirements. The primary deliverable will be a matrix relating use cases with functional requirements for repository platforms.

RDA/WDS Publishing Data Cost Recovery for Data Centres



General services to publish data are not available and the necessary editorial process leading to quality assured and efficiently usable data requires resources to be quantified. At present, there is an imbalance between the capacities and functionality of existing data centres and data repositories and the global production of scientific data. Budgets of data centres generally cover a precise scope, mostly data production of the host institution.

Thank You and Questions

plale@indiana.edu

enquiries@rd-alliance.org

rd-alliance.org

